

Off-cut Remover HEKTOR 2



Hektor separates milled PCBs carefully and fast. The off-cut material is removed smoothly and precisely. The matrix consists of two parts. This ensures easy and cost-saving change of the blades. Compressed air is used for the separation process. The operating pressure can be set on the machine. When the foot switch is pressed, the off-cut is punched out. The off-cuts are collected in the collecting box. When the gate is opened the waste material can be extracted.

Safe Operation

The PCB is slipped with its milled groove over the blade and is placed onto the matrix. The off-cut is pulled under the blade. When the foot switch is pressed, the off-cut is punched out and the waste material is collected inside the machine.

Part No.	Description
8932145	Off-Cut Remover Hektor 2 Contents of delivery: Hektor 2 with air pressure regulator Foot switch Adapter for dust extraction 1 L-blade – Please choose the size

Technical data	
Separation type	Punch blade
PCB thickness	max. 2.5 mm
Air connection	1/4"-plug-in coupler
Operating pressure	typical 4 bar
Mains voltage	10 - 35° C
Storage/transport temperature	-20 - 50° C
Humidity, non-condensing	10 - 85%
Safety regulations	CE, FCC class A
Weight	2.7 kg
Dimensions H x W x D	170 x 220 x 255 mm



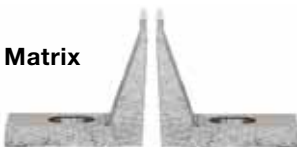
T-Blade

With the T-blade off-cuts can be punched out right and left of the blade without turning the PCB.



L-Blade

The L-blade will be used if there are small distances between the off-cuts.



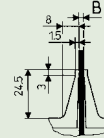
Matrix

Included in delivery.

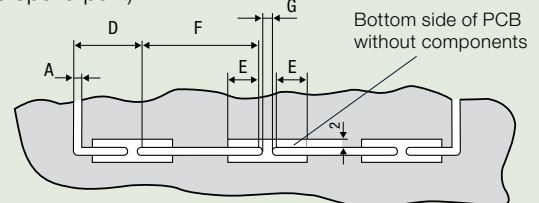
Blades

To ensure the blade will not be jammed in the PCB, the blade should be at least 0.15 mm smaller as the milled groove.

Part No.		A	B	C	D	E	F	G
8932137.001	Blade 1.5 T	≥1.5	1.35	17.2	4.7	>19.0	>19.0	3.0
8932138.001	Blade 2.0 T	≥2.0	1.85	17.2	5.2	>19.0	>19.0	3.0
8932191.001	Blade 2.4 T	≥2.4	2.25	18.0	5.7	>19.0	>19.0	3.0
8932139.001	Blade 2.5 T	≥2.5	2.35	18.0	5.7	>19.0	>19.0	3.0
8932144.001	Blade 3.0 T	≥3.0	2.85	18.0	5.7	>19.0	>19.0	2.5
8932122.001	Blade 1.5 L	≥1.5	1.35	12.0	4.7	>15.0	>13.0	3.0
8932123.001	Blade 2.0 L	≥2.0	1.85	12.0	5.2	>15.0	>13.0	3.0
8932141.001	Blade 2.4 L	≥2.4	2.25	12.0	5.7	>15.0	>13.0	3.0
8932124.001	Blade 2.5 L	≥2.5	2.35	12.0	5.7	>15.0	>13.0	3.0
8932125.001	Blade 3.0 L	≥3.0	2.85	12.0	5.7	>15.0	>13.0	2.5
8932171.001	Matrix (as spare part)							



Blades with varying thickness on request.



- *Headquarters in Germany*
- *cab subsidiaries*
350 distribution partners
in more than 80 countries.

cab is represented in every active commercial center - worldwide.



www.cab.de

Germany

cab Produkttechnik
GmbH & Co KG
Postfach 1904
76007 Karlsruhe
Wilhelm-Schickard-Str. 14
76131 Karlsruhe
Telefon +49 721 6626-0
Telefax +49 721 6626-249
www.cab.de
info@cab.de

Representatives in other countries on request.

France

cab technologies s.a.r.l.
67350 Niedermodern
Téléphone +33 388 722 501
www.cab.de/fr
info.fr@cab.de

USA

cab Technology Inc.
Tyngsboro MA, 01879
Phone +1 978 649 0293
www.cab.de/us
info.us@cab.de

South Africa

cab Technology (Pty.) Ltd.
2125 Randburg
Phone +27 11-886-3580
www.cab.de/za
info.za@cab.de

Asia 亚洲

cab Technology Co, Ltd.
希爱比科技股份有限公司
Junghe, Taipei, Taiwan
Phone +886 2 8227 3966
www.cab.de/tw
info.asia@cab.de

China 中国

cab (Shanghai) Trading Co., Ltd
铠博(上海)贸易有限公司
Phone +86 21 6236-3161
www.cab.de/cn
info.cn@cab.de

This documentation and any translations hereof are the property of cab GmbH & Co KG.

The replication, processing, reproduction or distribution in whole or in parts requires our prior written consent. © Copyright bei cab/9008452.

All delivery, design and technical specifications are compiled to the best of our current knowledge and are subject to change without prior notice.